

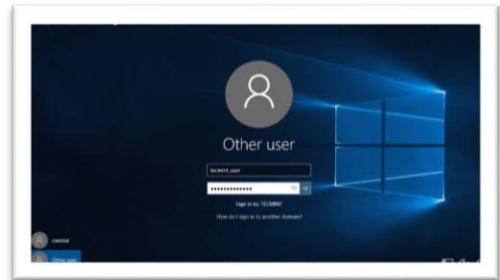
1:1 Student Device Roll-Out

Reminder: Please read your *District Issued Device & Internet Agreement Form* thoroughly and familiarize yourself with policies and expected responsibilities.

Section 1: Complete Section 1 before leaving campus.

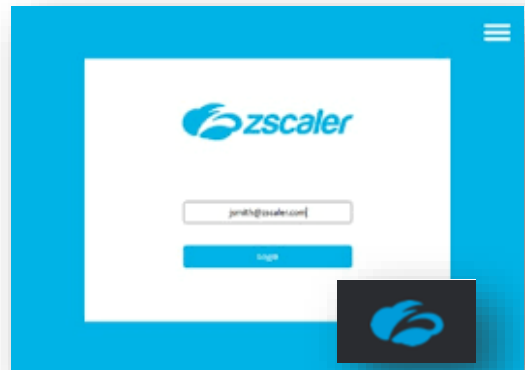
1. **Log-in:** When logging in for the first time to your 1:1 computer if you see another username simply click "Other/Switch User" and login from there using your digital key and password.
 - a. USERNAME: ENTER STUDENT NUMBER
 - b. PASSWORD ALL CAPS

*password is also called Digital Key

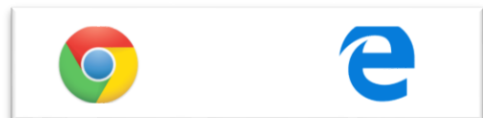


2. **ZAgent:** Login to the Zscaler App (Zagent box) before doing anything else.
LOGIN TO Z-APP: THE BOX THAT POPS UP at start up.
 - a. USERNAME:
STUDENTNUMBER@ONSLow.K12.NC.US
 - b. PASSWORD SAME AS COMPUTER LOGIN

*Locate app in taskbar. It should always be blue.



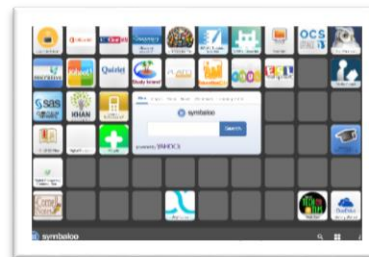
3. **Browser:** Go to both browsers (Chrome and Edge) to login to Zscaler, **you must do this at your school before you go home to access Internet off campus.** If the Zscaler page doesn't populate, open a new tab and go to Yahoo.com.
 1. Open Chrome, Type Yahoo.Com in The Address Bar
 2. Log Into Zscaler: Use Same Information From Step 2
 3. Open Edge: Repeat same as with Chrome.



Section 2 is on the back of this sheet. You may login to these applications off campus after completing Section 1 on campus.

Section 2: This section may be completed at home.

4. **1:1 OCS Digital Tools:** You can access OCS digital platform tools and applications using this shortcut.

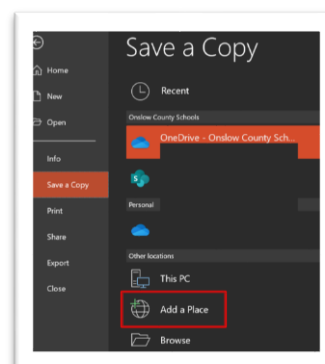
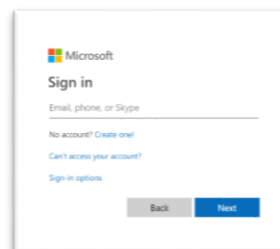


5. **Office 365:** Login to O365 using your studentnumber@student.onslow.k12.nc.us

*Remember, this is not your real email, this is just a username. Your email is in your login sheet.

- Open a Word online and click open new blank document.
- Click Open in Desktop App, this will allow you to sync it down to your desktop so you can use it both offline and online.
- Always save in OneDrive and not laptop.
- Save to OneDrive from computer. File > Save > Add a Place > OneDrive Onslow County Schools.

(Note: If you are having difficulties signing in, check that you are entering @student.onslow.k12.nc.us after your student number.)



If you need assistance, your Teacher can change student password in teacher's NCEd Cloud

1st time login

Username: Student #
Password: Onslow20

After 1st login, change password to Digital Key with first letter lowercase and remaining letters capitalized.

Tech Reminder: A simple restart can go a long way.

- Restarting your device can solve many problems.
- Properly Shut Down your device each night.
- Charge your device every night and leave charger at home.

